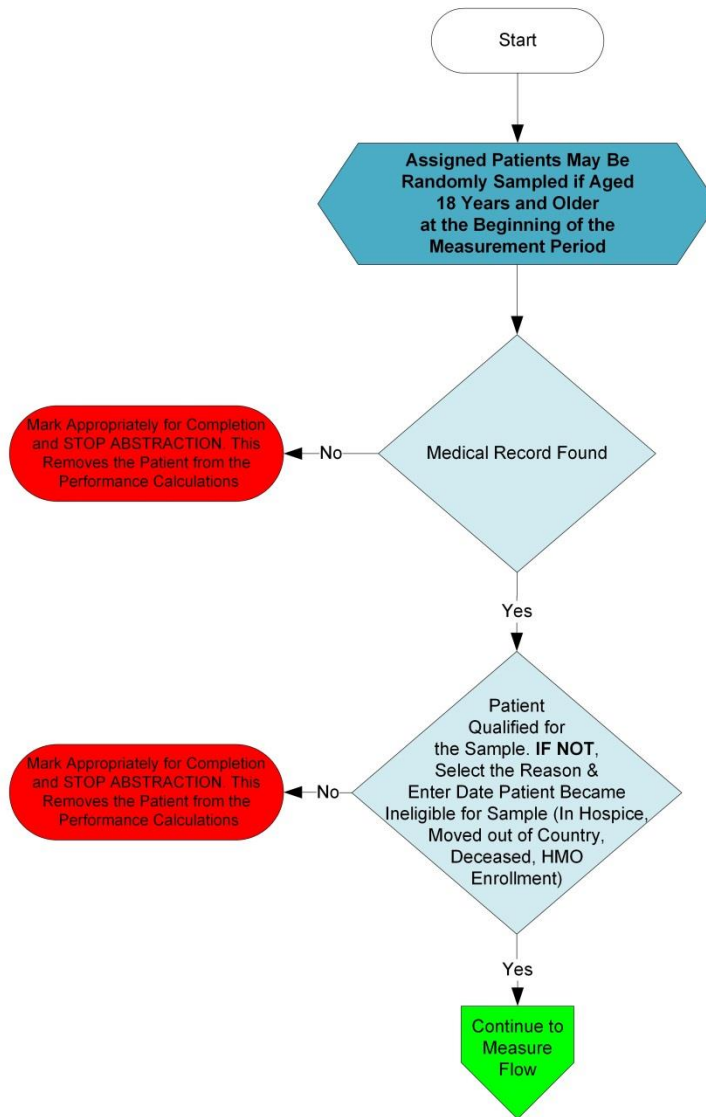
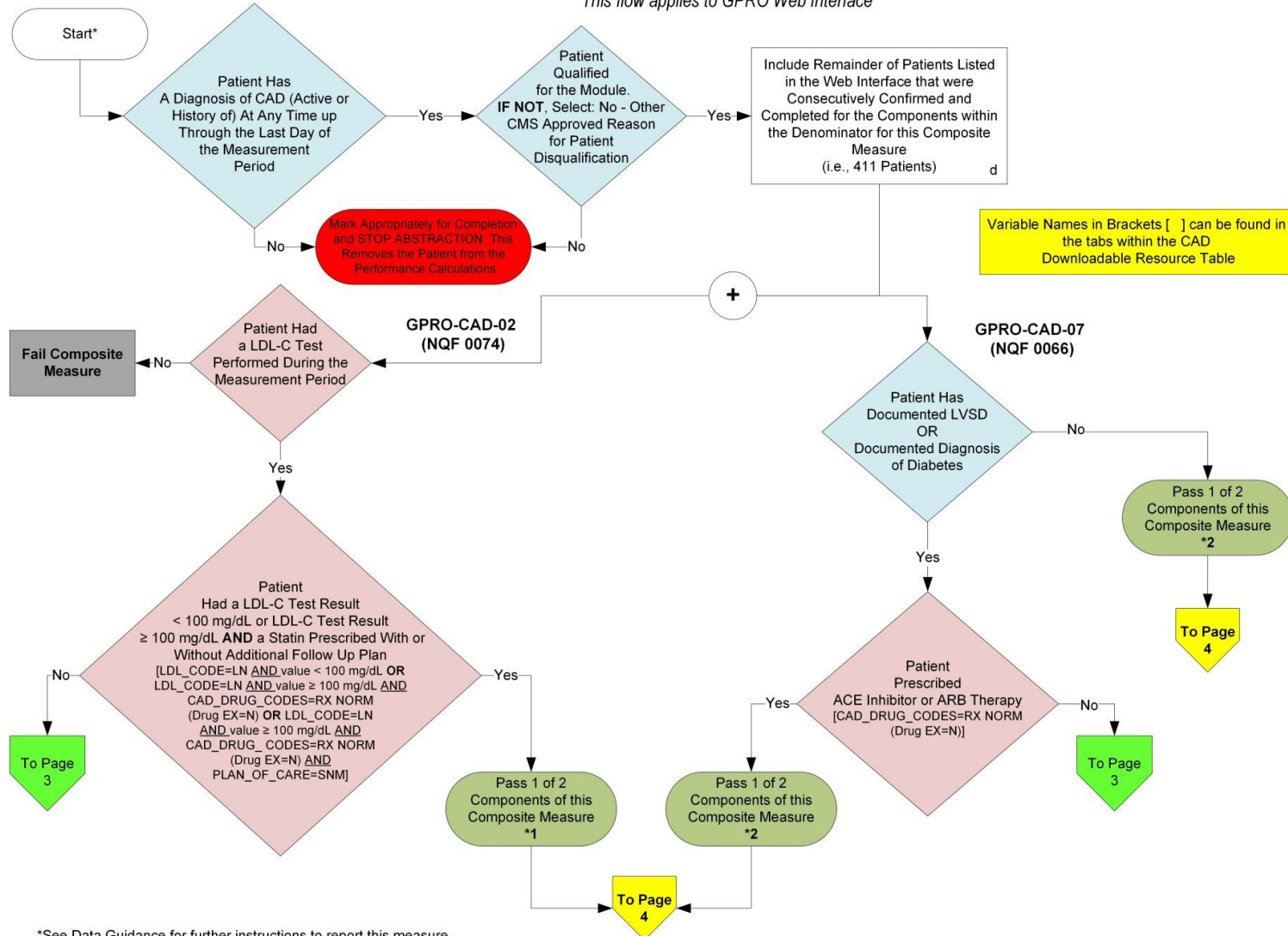


# Patient Confirmation Flow for CAD

For 2014, confirmation of the "Medical Record Found", or indicating the patient is "Not Qualified for Sample" with a reason of "In Hospice", "Moved out of Country", "Deceased", or "HMO Enrollment", will only need to be done **once** per patient. For module or measure specific reasons a patient is "Not Confirmed" or excluded for "Other CMS Approved Reason", please refer to the associated Data Guidance.



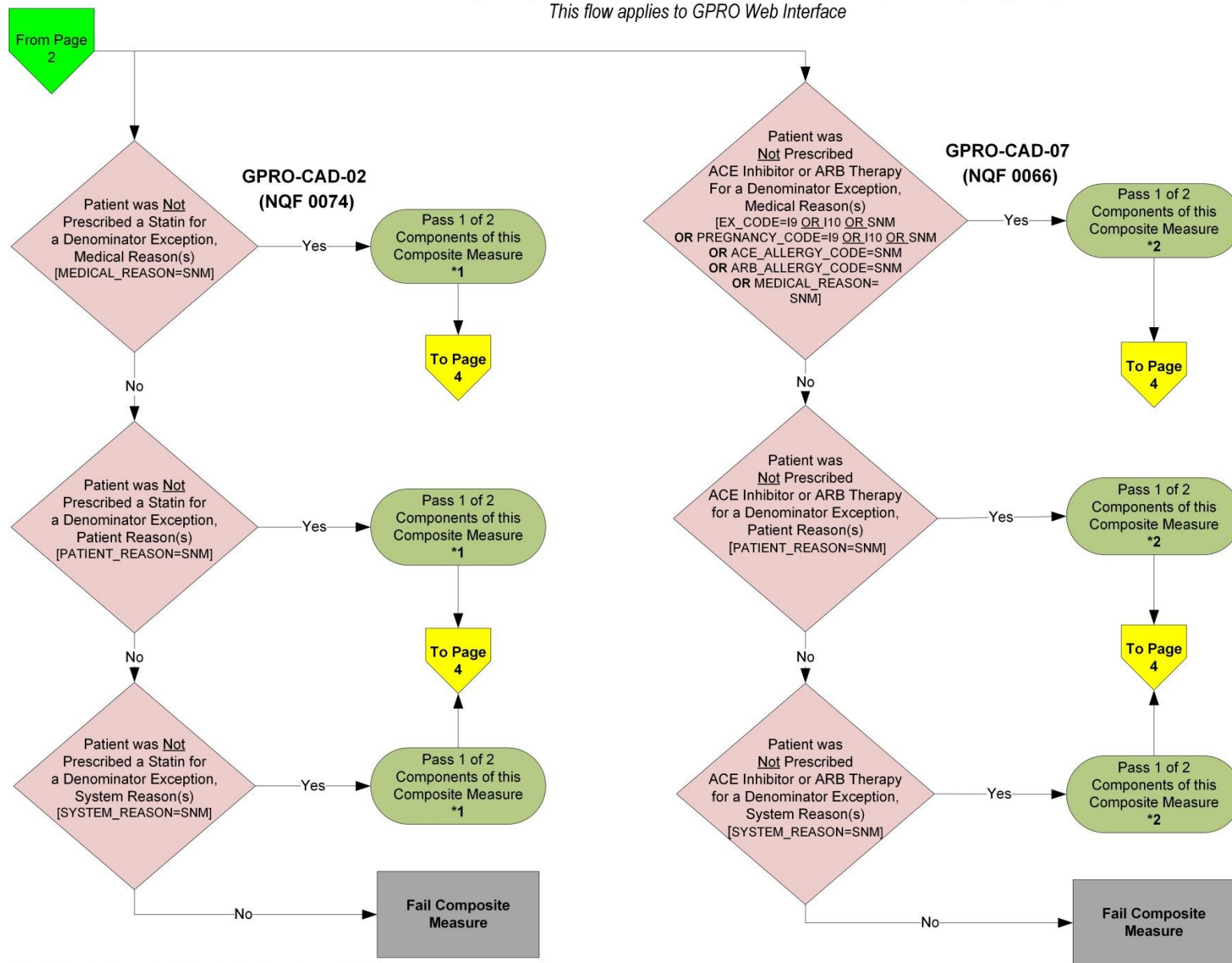
2014 GPRO CAD-Composite (NQF 0074 AND NQF 0066): Coronary Artery Disease (CAD): Composite  
This flow applies to GPRO Web Interface



\*See Data Guidance for further instructions to report this measure  
\*\*EX represents Exclusion or Exception as appropriate

v2.0

2014 GPRO CAD-Composite (NQF 0074 AND NQF 0066): Coronary Artery Disease (CAD) Composite  
 This flow applies to GPRO Web Interface

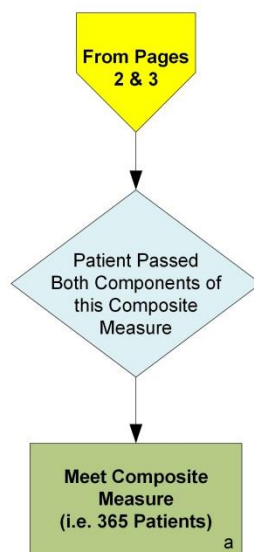


\*See Data Guidance for further instructions to report this measure

\*\*EX represents Exclusion or Exception as appropriate

v2.0

2014 GPRO CAD-Composite (NQF 0074 AND NQF 0066): Coronary Artery Disease (CAD): Composite  
*This flow applies to GPRO Web Interface*



**SAMPLE CALCULATION: (Composite)**

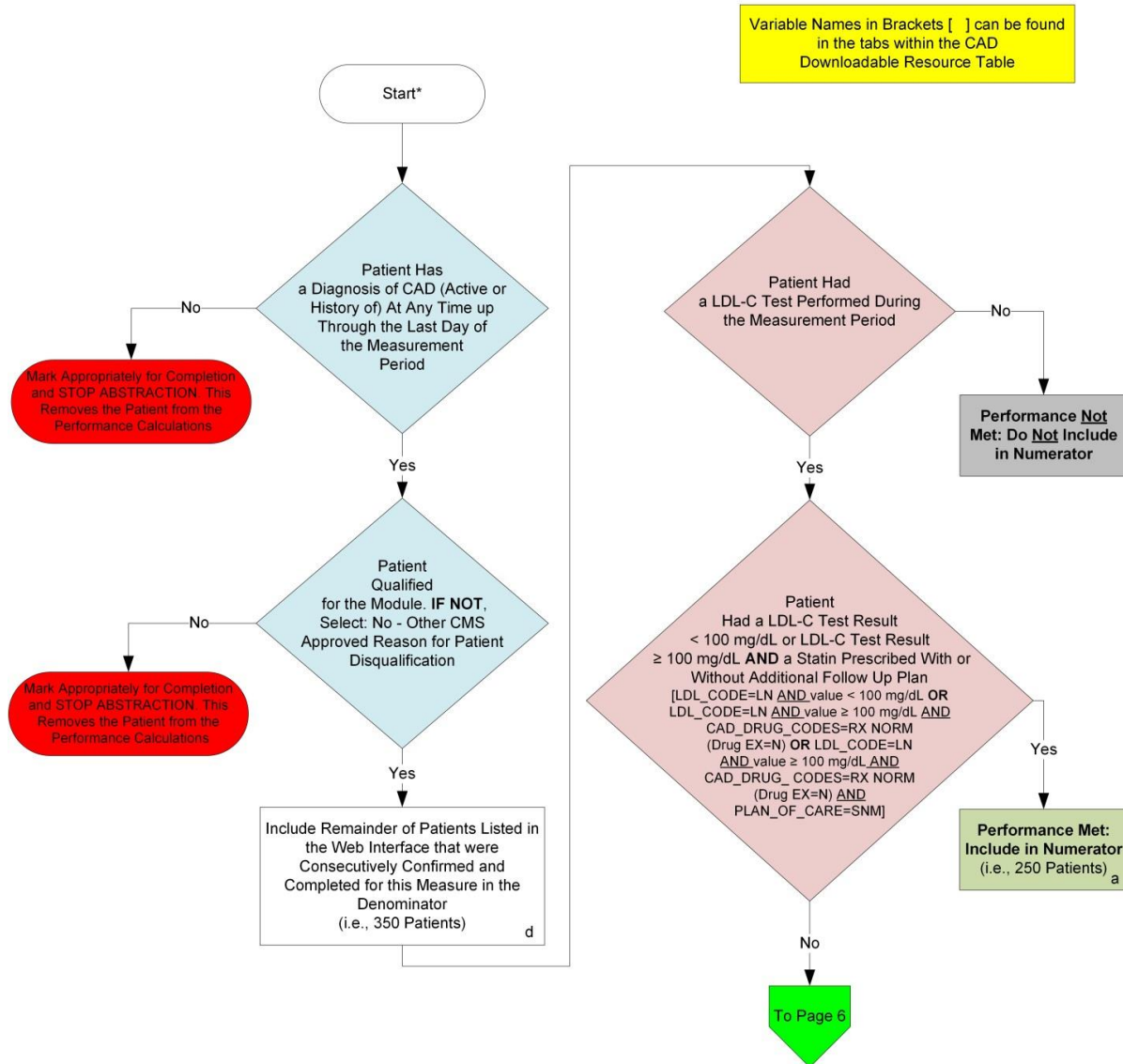
**Performance Rate=**

$$\frac{\text{Performance Met (a = 365 Patients)}}{\text{Eligible Denominator (d = 411 Patients)}} = \frac{365 \text{ Patients}}{411 \text{ Patients}} = 88.81\%$$

CALCULATIONS MAY CHANGE PENDING PERFORMANCES MET ABOVE

\*See Data Guidance for further instructions to report this measure

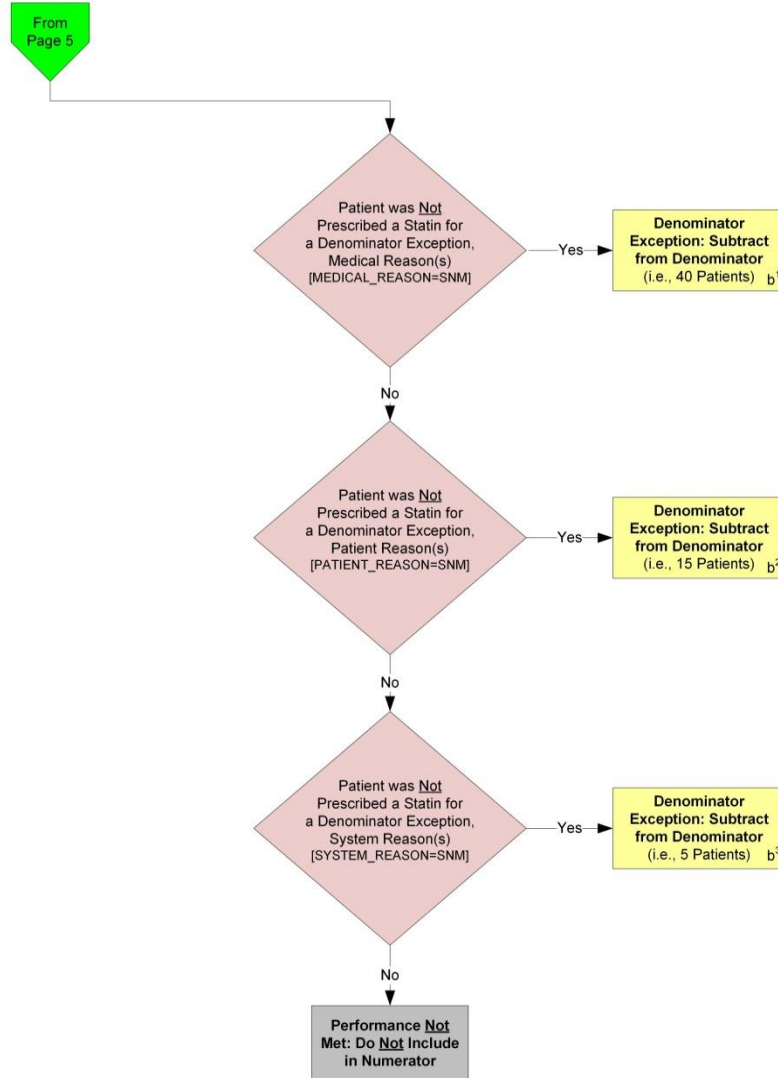
2014 GPRO-CAD-2 (NQF 0074): Coronary Artery Disease (CAD): Lipid Control  
 This flow applies to GPRO Web Interface



\*See Data Guidance for further instructions to report this measure  
 \*\*EX represents Exclusion or Exception as appropriate

v2.0

2014 GPRO-CAD-2 (NQF 0074): Coronary Artery Disease (CAD): Lipid Control  
This flow applies to GPRO Web Interface



**SAMPLE CALCULATION:**

Performance Rate=  
 Performance Met (a = 250 Patients) 250 Patients  
 Eligible Denominator (d=350 Patients) - Denominator Exception (b¹=40 Patients + b²=15 Patients + b³= 5 Patients) = 290 Patients = 86.21%

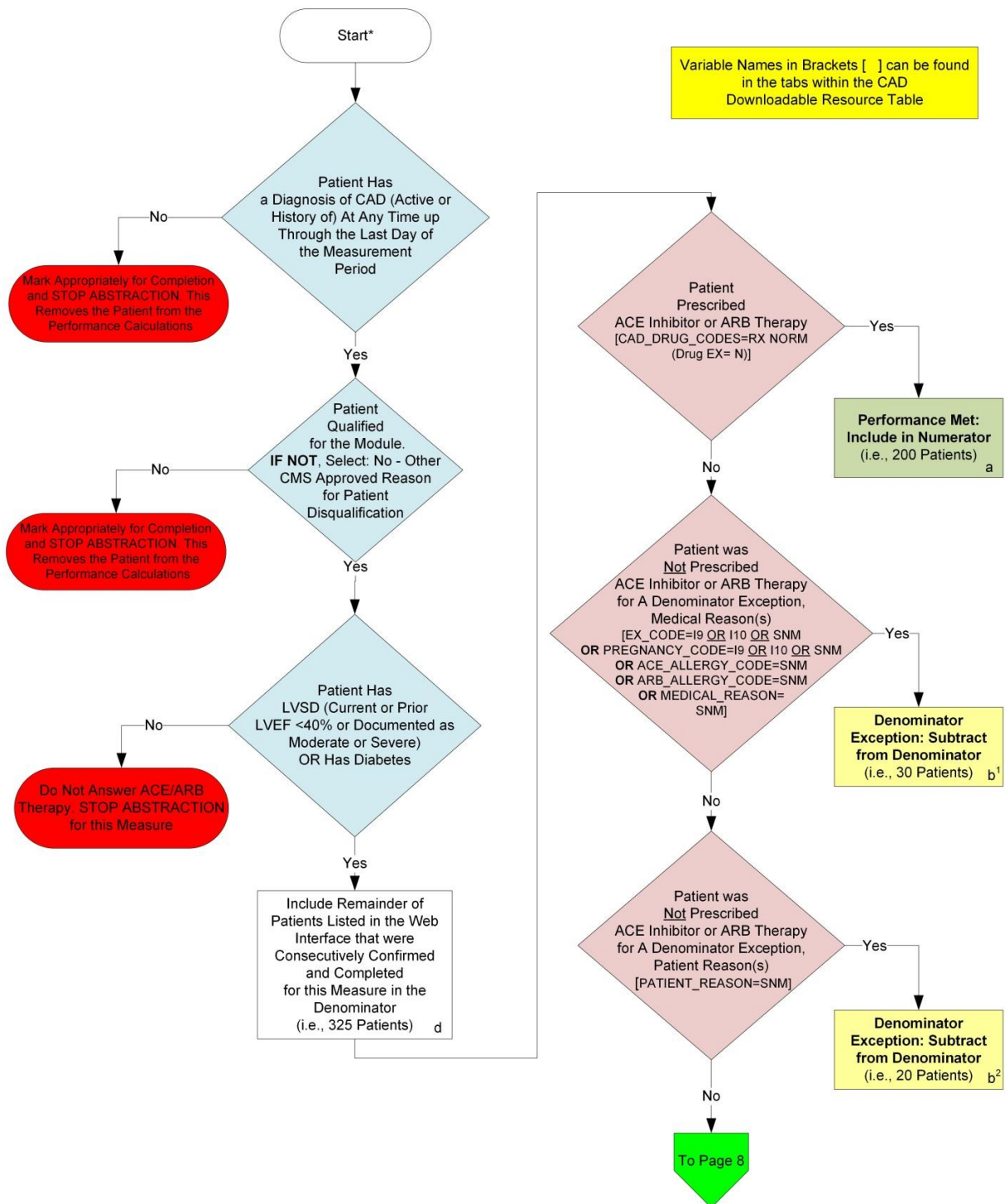
CALCULATION MAY CHANGE PENDING PERFORMANCE MET ABOVE

\*See Data Guidance for further instructions to report this measure

v2.0



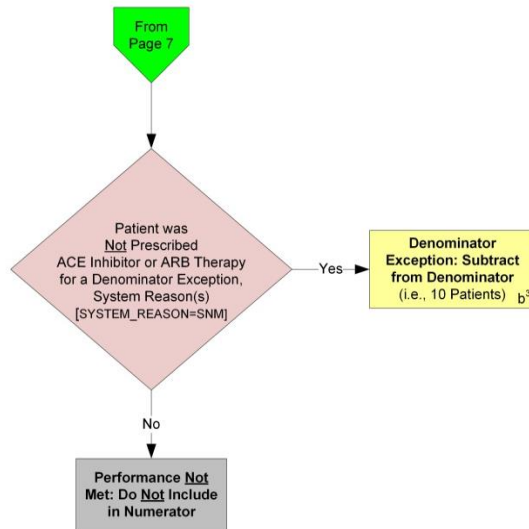
2014 GPRO-CAD-7 (NQF 0066): Coronary Artery Disease (CAD): Angiotensin-Converting Enzyme (ACE) Inhibitor or Angiotensin Receptor Blocker (ARB) Therapy - Diabetes or Left Ventricular Systolic Dysfunction (LVEF < 40%)  
*This flow applies to GPRO Web Interface*



\*See Data Guidance for further instructions to report this measure  
 \*\*EX represents Exclusion or Exception as appropriate

v2.0

2014 GPRO-CAD-7 (NQF 0066): Coronary Artery Disease (CAD): Angiotensin-Converting Enzyme (ACE) Inhibitor or Angiotensin Receptor Blocker (ARB) Therapy - Diabetes or Left Ventricular Systolic Dysfunction (LVEF < 40%)  
*This flow applies to GPRO Web Interface*



**Performance Rate=**

Performance Met (a = 200 Patients)

Eligible Denominator (d=325 Patients) - Denominator Exception (b¹=30 Patients + b²=20 Patients + b³=10 Patients) =  $\frac{200 \text{ Patients}}{265 \text{ Patients}} = 75.47\%$

CALCULATION MAY CHANGE PENDING PERFORMANCE MET ABOVE

**SAMPLE CALCULATION:**

\*See Data Guidance for further instructions to report this measure

v2.0



## Patient Confirmation Flow for CAD

For 2014, confirmation of the “Medical Record Found”, or indicating the patient is “Not Qualified for Sample” with a reason of “In Hospice”, “Moved out of Country”, “Deceased”, or “HMO Enrollment”, will only need to be done **once** per patient. For module or measure specific reasons a patient is “Not Confirmed” or excluded for “Other CMS Approved Reason”, please refer to the associated Data Guidance.

1. Start CAD Patient Confirmation Flow. Assigned patients may be randomly sampled if aged 18 years and older at the beginning of the measurement period.
2. Check to determine if Medical Record can be found
  - a. If no, Medical Record not found, mark appropriately for completion and stop abstraction. This removes the patient from the performance calculations. Stop processing.
  - b. If yes, Medical Record found, continue processing.
3. Check to determine if Patient Qualified for the sample
  - a. If no, the patient does not qualify for the sample, select the reason why and enter the date the patient became ineligible for sample. For example; In Hospice, Moved out of Country, Deceased, HMO Enrollment. Mark appropriately for completion and stop abstraction. This removes the patient from the performance calculations. Stop processing.
  - b. If yes, the patient does qualify for the sample; continue to the 2014 GPRO-CAD measure flows.

## 2014 GPRO CAD-Composite (NQF 0074 AND NQF 0066): Coronary Artery Disease (CAD): Composite

*This flow applies to GPRO Web Interface*

Variable names can be found in the tabs within the CAD Downloadable Resource Table.

See Data Guidance for further instructions to report this measure.

1. Start processing 2014 GPRO CAD-Composite (NQF 0074 and NQF 0066) Flow for the patients that qualified for sample in the CAD Patient Confirmation Flow.
2. Check to determine if the patient has a diagnosis of CAD (active or history of) at any time up through the last day of the measurement period.
  - a. If no, the patient does not have a diagnosis of CAD (active or history of) at any time up through the last day of the measurement period, mark appropriately for completion and stop abstraction. This removes the patient from the performance calculations. Stop processing.
  - b. If yes, the patient does have a diagnosis of CAD (active or history of) at any time up through the last day of the measurement period, continue processing.
3. Check to determine if the patient qualifies for the module.
  - a. If no, the patient did not qualify for the module select: No – Other CMS Approved Reason for patient disqualification. Mark appropriately for completion and stop abstraction. This removes the patient from the performance calculations. Stop processing.
  - b. If yes, the patient does qualify for the module, the patient will be included in the eligible denominator for performance rate calculations. Note: Include remainder of patients listed in the Web Interface that were consecutively confirmed and completed for the components within the denominator for this composite measure. For the sample performance rate calculation in the flow these patients would fall into the 'd' category (eligible denominator, i.e. 411 patients). Continue processing.
4. Check to determine if the patient had a LDL-C test performed during the measurement period (GPRO-CAD-2).
  - a. If no, the patient did not have a LDL-C test performed during the measurement period, the patient fails the composite measure. Stop processing composite measure.
  - b. If yes, the patient did have a LDL-C test performed during the measurement period, continue processing and proceed to step 5.
5. Check to determine if the patient had a LDL-C test result < 100 mg/dL or LDL-C test result ≥ 100 mg/dL **AND** a statin prescribed with or without additional follow up plan (GPRO CAD-2). Variable Names: LDL\_CODE=LN AND value < 100 mg/dL **OR** LDL\_CODE=LN AND value ≥ 100 mg/dL AND CAD\_DRUG\_CODES=RXNORM (drug EX=N) **OR** LDL\_CODE=LN AND value ≥ 100 mg/dL AND CAD\_DRUG\_CODES=RXNORM (drug EX=N) AND PLAN\_OF\_CARE=SNM.
  - a. If no, the patient did not have a LDL-C test result <100 mg/dl or LDL-C test result ≥ 100 mg/dL **AND** a statin prescribed with or without additional follow up plan, continue processing and proceed to step 6.
  - b. If yes, the patient did have a LDL-C test result <100 mg/dl or LDL-C test result ≥ 100 mg/dL **AND** a statin prescribed with or without additional follow up plan, the patient

passes 1 of 2 components of the CAD composite measure. Proceed to step 14 for GPRO CAD-2. Continue processing for GPRO-CAD-7 and proceed to step 9.

6. Check to determine if the patient was Not prescribed a statin for a denominator exception, medical reason(s) (GPRO CAD-2). Variable Names: MEDICAL\_REASON=SNM.
  - a. If no, the patient was Not prescribed a statin for a denominator exception, medical reason(s), continue processing and proceed to step 7.
  - b. If yes, the patient was Not prescribed a statin for a denominator exception, medical reason(s), the patient passes 1 of 2 components of the CAD composite measure. Proceed to step 14 for GPRO CAD-2. Continue processing for GPRO CAD-7 and proceed to step 9.
7. Check to determine if the patient was Not prescribed a statin for a denominator exception, patient reason(s). Variable Names: PATIENT\_REASON=SNM.
  - a. If no, the patient was Not prescribed a statin for a denominator exception, patient reason(s), continue processing and proceed to step 8.
  - b. If yes, the patient was Not prescribed a statin for a denominator exception, patient reasons(s), the patient passes 1 of 2 components of the CAD composite measure. Proceed to step 14 for GPRO CAD-2. Continue processing for GPRO CAD-7 and proceed to step 9.
8. Check to determine if the patient was Not prescribed a statin a denominator exception, for system reason(s). Variable Names: SYSTEM\_REASON=SNM.
  - a. If no, the patient was Not prescribed a statin a denominator exception, for system reason(s), the patient fails the composite measure, stop processing.
  - b. If yes, the patient was Not prescribed a statin a denominator exception, for system reason(s), the patient passes 1 of 2 components of the CAD composite measure. Proceed to step 14 for GPRO CAD-2. Continue processing for GPRO CAD-7 and proceed to step 9.
9. Check to determine if the patient has documented LVSD or documented diagnosis of diabetes (GPRO CAD-7).
  - a. If no, the patient did not have documented LVSD or documented diagnosis of diabetes, the patient passes 1 of 2 components of the CAD composite measure. Proceed to step 14.
  - b. If yes, the patient did have documented LVSD or documented diagnosis of diabetes, continue processing and proceed to step 10.
10. Check to determine if the patient was prescribed ACE Inhibitor or ARB Therapy. Variable Names: CAD\_DRUG\_CODE=RXNORM (drug EX=N).
  - a. If no, the patient was not prescribed ACE Inhibitor or ARB Therapy, continue processing and proceed to step 11.
  - b. If yes, the patient was prescribed ACE Inhibitor or ARB Therapy, the patient passes 1 of 2 components of the CAD composite measure. Continue processing and proceed to step 14.
11. Check to determine if the patient was Not prescribed ACE Inhibitor or ARB Therapy for a denominator exception, medical reason(s) (GPRO CAD-7). Variable Names: EX\_CODE=I9 OR I10 OR SNM **OR** PREGNANCY\_CODE=I9 OR I10 OR SNM **OR** ACE\_ALLERGY\_CODE=SNM **OR** ARB\_ALLERGY\_CODE=SNM **OR** MEDICAL\_REASON=SNM.

- a. If no, the patient was Not prescribed ACE Inhibitor or ARB Therapy for a denominator exception, medical reason(s), continue processing and proceed to step 12.
  - b. If yes, the patient was Not prescribed ACE Inhibitor or ARB Therapy for a denominator exception, medical reason(s), the patient passes 1 of 2 components of the CAD composite measure. Continue processing and proceed to step 14.
12. Check to determine if the patient was Not prescribed ACE Inhibitor or ARB Therapy for a denominator exception, patient reason(s). Variable Names: PATIENT\_REASON=SNM.
  - a. If no, the patient was Not prescribed ACE Inhibitor or ARB Therapy for a denominator exception, patient reason(s), continue processing and proceed to step 13.
  - b. If yes, the patient was Not prescribed ACE Inhibitor or ARB Therapy for a denominator exception, patient reason(s), the patient passes 1 of 2 components of the CAD composite measure. Continue processing and proceed to step 14.
13. Check to determine if the patient was Not prescribed ACE Inhibitor or ARB Therapy for a denominator exception, system reason(s). Variable Names: SYSTEM\_REASON=SNM.
  - a. If no, the patient was Not prescribed ACE Inhibitor or ARB Therapy for a denominator exception, system reason(s), the patient fails the composite measure. Stop processing.
  - b. If yes, the patient was Not prescribed ACE Inhibitor or ARB Therapy for a denominator exception, system reason(s), the patient passes 1 of 2 components of the CAD composite measure. Continue processing and proceed to step 14.
14. Determine if the patient passed both GPRO CAD-2 and GPRO CAD-7 components of the composite measure. If the patient passed both components, the patient meets the composite measure. For the sample performance rate calculation in the flow these patients would fall into the 'a' category (numerator, i.e. 365 patients).

### **Sample Calculation**

Performance Rate Equals

Performance Met is category 'a' in the measure flow (365 patients)

Eligible Denominator is category 'd' in measure flow (411 patients)

365 (Performance Met) divided by 411 (Eligible Denominator) equals a performance rate of 88.81 percent

Calculation May Change Pending Performance Met

## 2014 GPRO-CAD-2 (NQF 0074): Coronary Artery Disease (CAD): Lipid Control

*This flow applies to GPRO Web Interface*

Variable names can be found in the tabs within the CAD Downloadable Resource Table.  
See Data Guidance for further instructions to report this measure.

1. Start processing 2014 GPRO CAD-2 (NQF 0074) Flow for the patients that qualified for sample in the CAD Patient Confirmation Flow.
2. Check to determine if patient has a diagnosis of CAD (active or history of) at any time in the patient's history up through the last day of the measurement period.
  - a. If no, the patient does not have a diagnosis of CAD (active or history of) at any time in the patient's history up through the last day of the measurement period, mark appropriately for completion and stop abstraction. This removes the patient from the performance calculations. Stop processing.
  - b. If yes, the patient does have a diagnosis of CAD (active or history of) at any time in the patient's history up through the last day of the measurement period, continue processing.
3. Check to determine if the patient qualifies for the module.
  - a. If no, the patient did not qualify for the module select: No – Other CMS Approved Reason for patient disqualification. Mark appropriately for completion and stop abstraction. This removes the patient from the performance calculations. Stop processing.
  - b. If yes, the patient does qualify for the module, the patient will be included in the eligible denominator for performance rate calculations. Note: Include remainder of patients listed in the Web Interface that were consecutively confirmed and completed for this measure in the denominator. For the sample performance rate calculation in the flow these patients would fall into the 'd' category (eligible denominator, i.e. 350 patients). Continue processing.
4. Check to determine if the patient had a LDL-C test performed during the measurement period (GPRO CAD-2).
  - a. If no, the patient did not have a LDL-C test performed during the measurement period, performance is not met and should not be included in the numerator. Stop processing.
  - b. If yes, the patient did have a LDL-C test performed, continue processing.
5. Check to determine if the patient had a LDL-C test result <100 mg/dL or LDL-C test result ≥ 100 mg/dL **AND** a statin prescribed with or without additional follow up plan. Variable Names:  
LDL\_CODE=LN AND value < 100 mg/dL **OR** LDL\_CODE=LN AND value ≥ 100 mg/dL AND CAD\_DRUG\_CODES=RXNORM (drug EX=N) **OR** LDL\_CODE=LN AND value ≥ 100 mg/dL AND CAD\_DRUG\_CODES=RXNORM (drug EX=N) AND PLAN\_OF\_CARE=SNM.
  - a. If no, the patient did not have a LDL-C test result < 100 mg/dL or LDL-C test result ≥100 mg/dL **AND** a statin prescribed with or without additional follow up plan, continue processing.
  - b. If yes, the patient did have a LDL-C test result < 100 mg/dL or LDL-C test result ≥100 mg/dL **AND** a statin prescribed with or without additional follow up plan, performance is met and the patient will be included in the numerator. For the sample performance rate calculation in the flow these patients would fall into the 'a' category (numerator, i.e. 250 patients). Stop processing.

6. Check to determine if the patient was Not prescribed a statin for a denominator exception, medical reason(s). Variable Names: MEDICAL\_REASON=SNM.
  - a. If no, the patient was Not prescribed a statin for a denominator exception, medical reason(s), continue processing.
  - b. If yes, the patient was Not prescribed a statin for a denominator exception, medical reason(s), this is a denominator exception and the case should be subtracted from the eligible denominator. For the sample performance rate calculation in the flow these patients would fall into the 'b<sup>1</sup>' category (denominator exception, i.e. 40 patients). Stop processing.
7. Check to determine if the patient was Not prescribed a statin for a denominator exception, patient reason(s). Variable Names: PATIENT\_REASON =SNM.
  - a. If no, the patient was Not prescribed a statin for a denominator exception, patient reason(s), continue processing.
  - b. If yes, the patient was Not prescribed a statin for a denominator exception, patient reason(s), this is a denominator exception and the case should be subtracted from the eligible denominator. For the sample performance rate calculation in the flow these patients would fall into the 'b<sup>2</sup>' category (denominator exception, i.e. 15 patients). Stop processing.
8. Check to determine if the patient was Not prescribed a statin for a denominator exception, system reason(s). Variable Names: SYSTEM\_REASON =SNM.
  - a. If no, the patient was Not prescribed a statin for a denominator exception, system reason(s), performance is not met and should not be included in the numerator. Stop processing.
  - b. If yes, the patient was Not prescribed a statin for a denominator exception, system reason(s), this is a denominator exception and the case should be subtracted from the eligible denominator. For the sample performance rate calculation in the flow these patients would fall into the 'b<sup>3</sup>' category (denominator exception, i.e. 5 patients).

### **Sample Calculation**

Performance Rate Equals

Performance Met is category 'a' in the measure flow (250 patients)

Eligible Denominator is category 'd' in measure flow (350 patients)

Denominator Exception is category 'b<sup>1</sup> plus b<sup>2</sup> plus b<sup>3</sup>' in measure flow (60 Patients)

250 (Performance Met) divided by 290 (Eligible Denominator minus Denominator Exception) equals a performance rate of 86.21 percent

Calculation May Change Pending Performance Met



## **2014 GPRO-CAD-7 (NQF 0066): Coronary Artery Disease (CAD): Angiotensin-Converting Enzyme (ACE) Inhibitor or Angiotensin Receptor Blocker (ARB) Therapy - Diabetes or Left Ventricular Systolic Dysfunction (LVEF < 40%)**

*This flow applies to GPRO Web Interface*

Variable names can be found in the tabs within the CAD Downloadable Resource Table.  
See Data Guidance for further instructions to report this measure.

1. Start processing 2014 GPRO CAD-7 (NQF 0066) Flow for the patients that qualified for sample in the CAD Patient Confirmation Flow.
2. Check to determine if the patient has a diagnosis CAD (active or history of) at any time in the patient's history up through the last day of the measurement period.
  - a. If no, the patient does not have a diagnosis of CAD (active or history of) at any time in the patient's history up through the last day of the measurement period, mark appropriately for completion and stop abstraction. This removes the patient from the performance calculations. Stop processing.
  - b. If yes, the patient does have a diagnosis of CAD (active or history of) at any time in the patient's history up through the last day of the measurement period, continue processing.
3. Check to determine if the patient qualifies for the module.
  - a. If no, the patient did not qualify for the module select: No – Other CMS Approved Reason for patient disqualification. Mark appropriately for completion and stop abstraction. This removes the patient from the performance calculations. Stop processing.
  - b. If yes, the patient does qualify for the module, continue processing.
4. Check to determine if the patient has LVSD (current or prior LVEF less than 40 percent or documented as moderate or severe) or has diabetes.
  - a. If no, the patient did not have LVSD (current or prior LVEF less than 40 percent or documented as moderate or severe) **OR** has diabetes, stop abstraction and do not answer ACE/ARB Therapy for this measure. Stop processing.
  - b. If yes, the patient did have documented LVSD (current or prior LVEF less than 40 percent or documented as moderate or severe) **OR** has diabetes, the patient will be included in the eligible denominator for performance rate calculations. Note: Include remainder of patients listed in the Web Interface that were consecutively confirmed and completed for this measure in the denominator. For the sample performance rate calculation in the flow these patients would fall into the 'd' category (eligible denominator, i.e. 325 patients). Continue processing.
5. Check to determine if the patient was prescribed ACE Inhibitor or ARB Therapy. Variable Names: CAD\_DRUG\_CODE=RXNORM (drug EX=N).
  - a. If no, the patient was not prescribed ACE Inhibitor or ARB Therapy, continue processing.
  - b. If yes, the patient was prescribed ACE Inhibitor or ARB Therapy, performance is met and the patient will be included in the numerator. For the sample performance rate calculation in the flow these patients would fall into the 'a' category (numerator, i.e. 200 patients). Stop processing.

6. Check to determine if the patient was Not prescribed ACE Inhibitor or ARB Therapy for a denominator exception, medical reason(s). Variable Names: EX\_CODE=I9 OR I10 OR SNM **OR** PREGNANCY\_CODE=I9 OR I10 OR SNM **OR** ACE\_ALLERGY\_CODE=SNM **OR** ARB\_ALLERGY\_CODE=SNM **OR** MEDICAL\_REASON=SNM.
  - a. If no, patient was Not prescribed ACE Inhibitor or ARB Therapy for a denominator exception, medical reason(s), continue processing.
  - b. If yes, patient was Not prescribed ACE Inhibitor or ARB Therapy for a denominator exception, medical reason(s), this is a denominator exception and the case should be subtracted from the eligible denominator. For the sample performance rate calculation in the flow these patients would fall into the 'b' category (denominator exception, i.e. 30 patients). Stop processing.
7. Check to determine if the patient was Not prescribed ACE Inhibitor or ARB Therapy for a denominator exception, patient reason(s). Variable Names: PATIENT\_REASON= SNM.
  - a. If no, patient was Not prescribed ACE Inhibitor or ARB Therapy for a denominator exception, patient reason(s), continue processing.
  - b. If yes, patient was Not prescribed ACE Inhibitor or ARB Therapy for a denominator exception, patient reason(s), this is a denominator exception and the case should be subtracted from the eligible denominator. For the sample performance rate calculation in the flow these patients would fall into the 'b' category (denominator exception, i.e. 20 patients). Stop processing.
8. Check to determine if the patient was Not prescribed ACE Inhibitor or ARB Therapy for a denominator exception, system reason(s). Variable Names: SYSTEM\_REASON=SNM.
  - a. If no, patient was Not prescribed ACE Inhibitor or ARB Therapy for a denominator exception, system reason(s), performance is not met and should not be included in the numerator. Stop processing.
  - b. If yes, patient was Not prescribed ACE Inhibitor or ARB Therapy for a denominator exception, system reason(s), this is a denominator exception and the case should be subtracted from the eligible denominator. For the sample performance rate calculation in the flow these patients would fall into the 'b' category (denominator exception, i.e. 10 patients). Stop processing.

### **Sample Calculation**

Performance Rate Equals

Performance Met is category 'a' in the measure flow (200 patients)

Eligible Denominator is category 'd' in measure flow (325 patients)

Denominator Exception is category 'b' plus b<sup>2</sup> plus b<sup>3</sup> in measure flow (60 Patients)

200 (Performance Met) divided by 265 (Eligible Denominator minus Denominator Exception) equals a performance rate of 75.47 percent

Calculation May Change Pending Performance Met