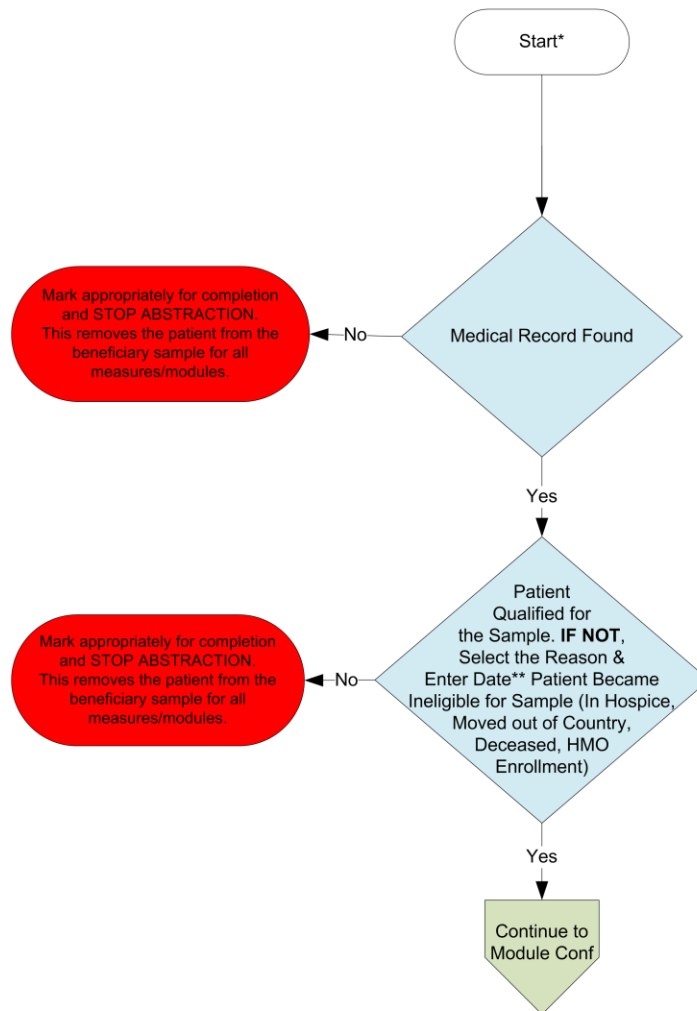


Patient Confirmation Flow

For 2016, confirmation of the "Medical Record Found", or indicating the patient is "Not Qualified for Sample" with a reason of "In Hospice", "Moved out of Country", "Deceased", or "HMO Enrollment", will only need to be done **once** per patient. Refer to the Data Guidance for further instructions.

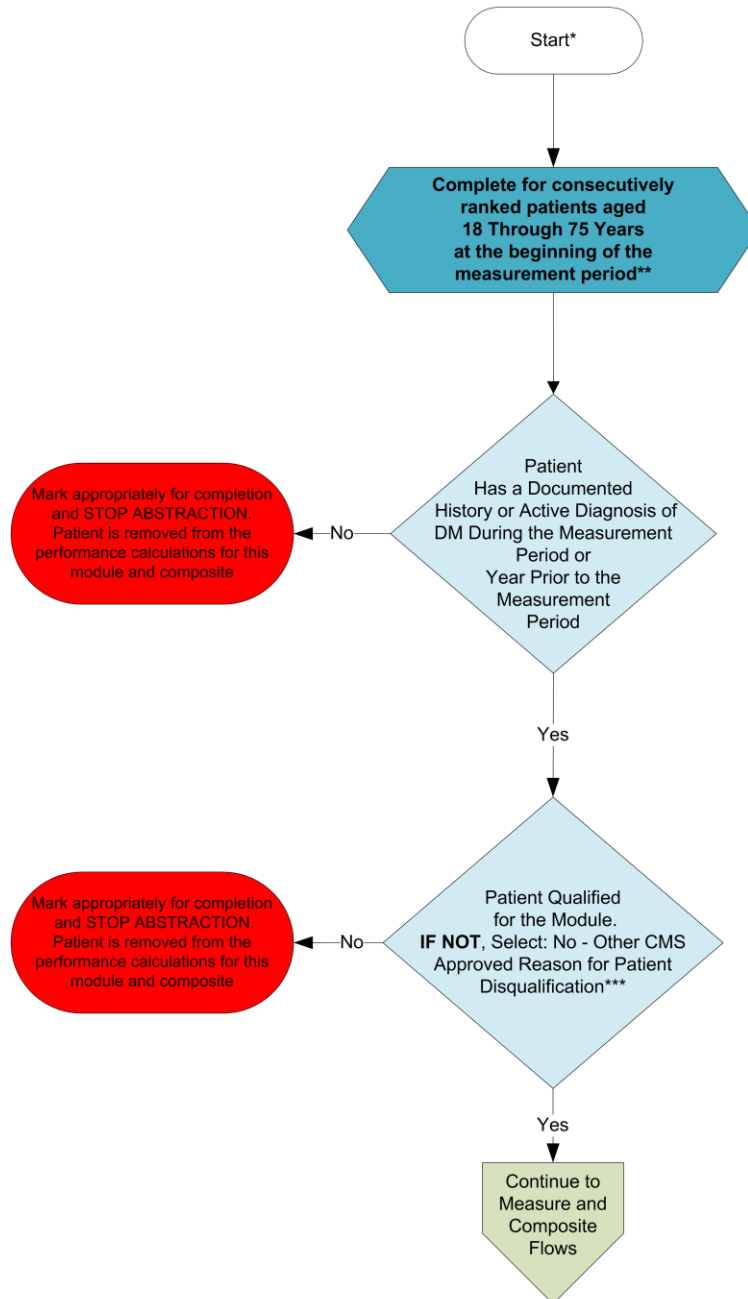


*See Data Guidance for further instructions to report this module

** If date is unknown, enter 12/31/16

Module Confirmation Flow for Diabetes Module

For 2016, module or measure specific reasons a patient is "Not Confirmed" or excluded for "Denominator Exclusion" or "Other CMS Approved Reason" will need to be done for each measure/module where the patient appears. Refer to the Data Guidance for further instructions.

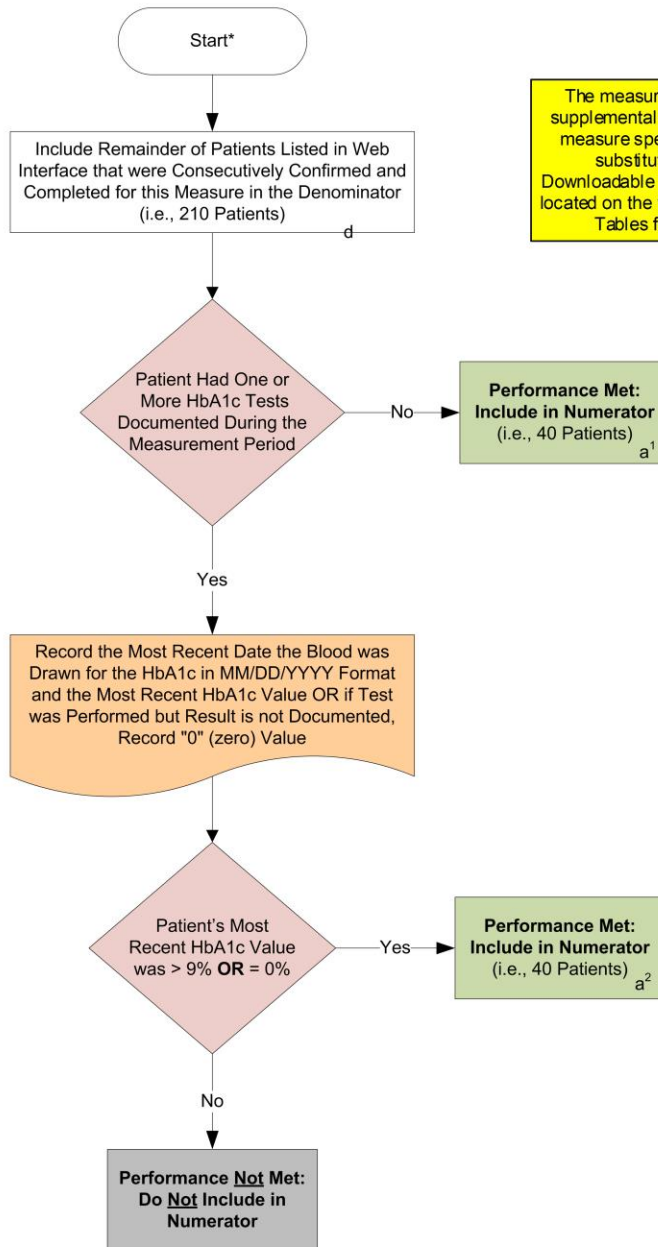


*See Data Guidance for further instructions to report this module

**Further information regarding patient selection for specific disease modules and patient care measures can be found in the Web Interface Sampling Methodology Document. For patients who have the incorrect date of birth listed, a change of the patient date of birth by the abstractor may result in the patient no longer qualifying for the DM module. If this is the case, the system will automatically remove the patient from the measure requirements

***"Other CMS Approved Reason", is requested and approved by opening a Help Desk Ticket at Qnetsupport@hcqis.org

2016 GPRO DM-2 (NQF 0059): Diabetes: Hemoglobin A1c Poor Control
 This flow applies to GPRO Web Interface



The measure diagrams were developed by CMS as a supplemental resource to be used in conjunction with the measure specifications. They should not be used as a substitution for the measure specification. For Downloadable Resource Mapping, use the Variable Names located on the tabs within the DM Data Guidance and Code Tables found in the DM Supporting Document

SAMPLE CALCULATION:

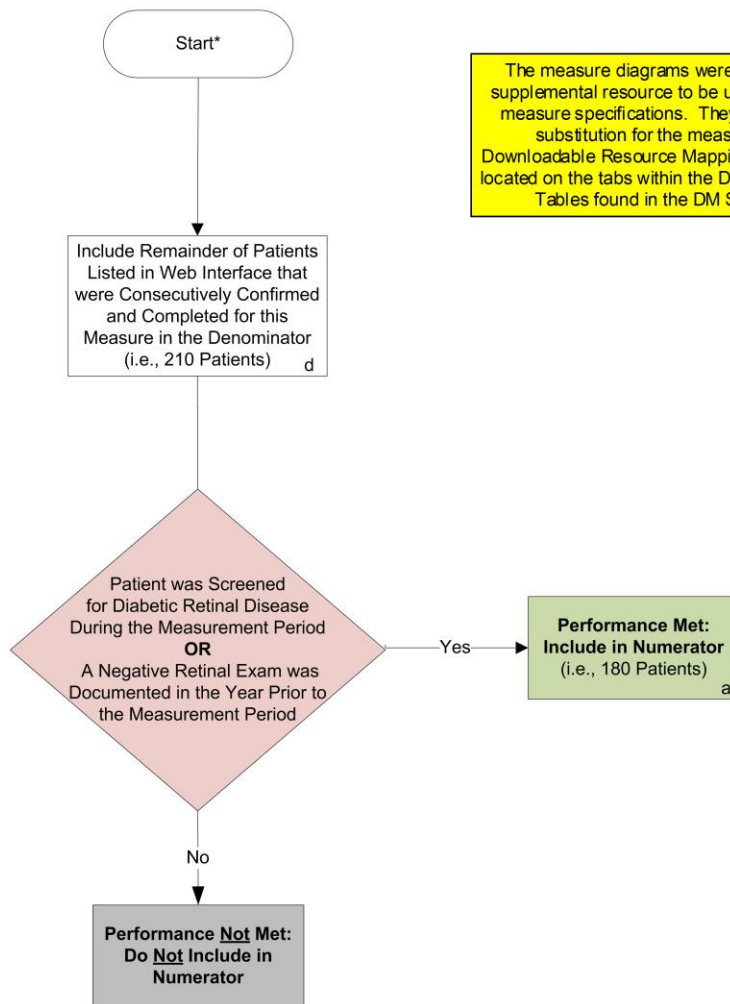
Performance Rate=

$$\frac{\text{Performance Met (a}^1\text{=40 Patients + a}^2\text{=40 Patients)}}{\text{Eligible Denominator (d=210 Patients)}} = \frac{80 \text{ Patients}}{210 \text{ Patients}} = 38.10\%$$

CALCULATION MAY CHANGE PENDING PERFORMANCE MET ABOVE
 FOR THIS MEASURE, A LOWER RATE INDICATES BETTER PERFORMANCE/CONTROL

*See Data Guidance for further instructions to report this measure

2016 GPRO DM-7 (NQF 0055): Diabetes: Eye Exam
 This flow applies to GPRO Web Interface



The measure diagrams were developed by CMS as a supplemental resource to be used in conjunction with the measure specifications. They should not be used as a substitution for the measure specification. For Downloadable Resource Mapping, use the Variable Names located on the tabs within the DM Data Guidance and Code Tables found in the DM Supporting Document

SAMPLE CALCULATION:

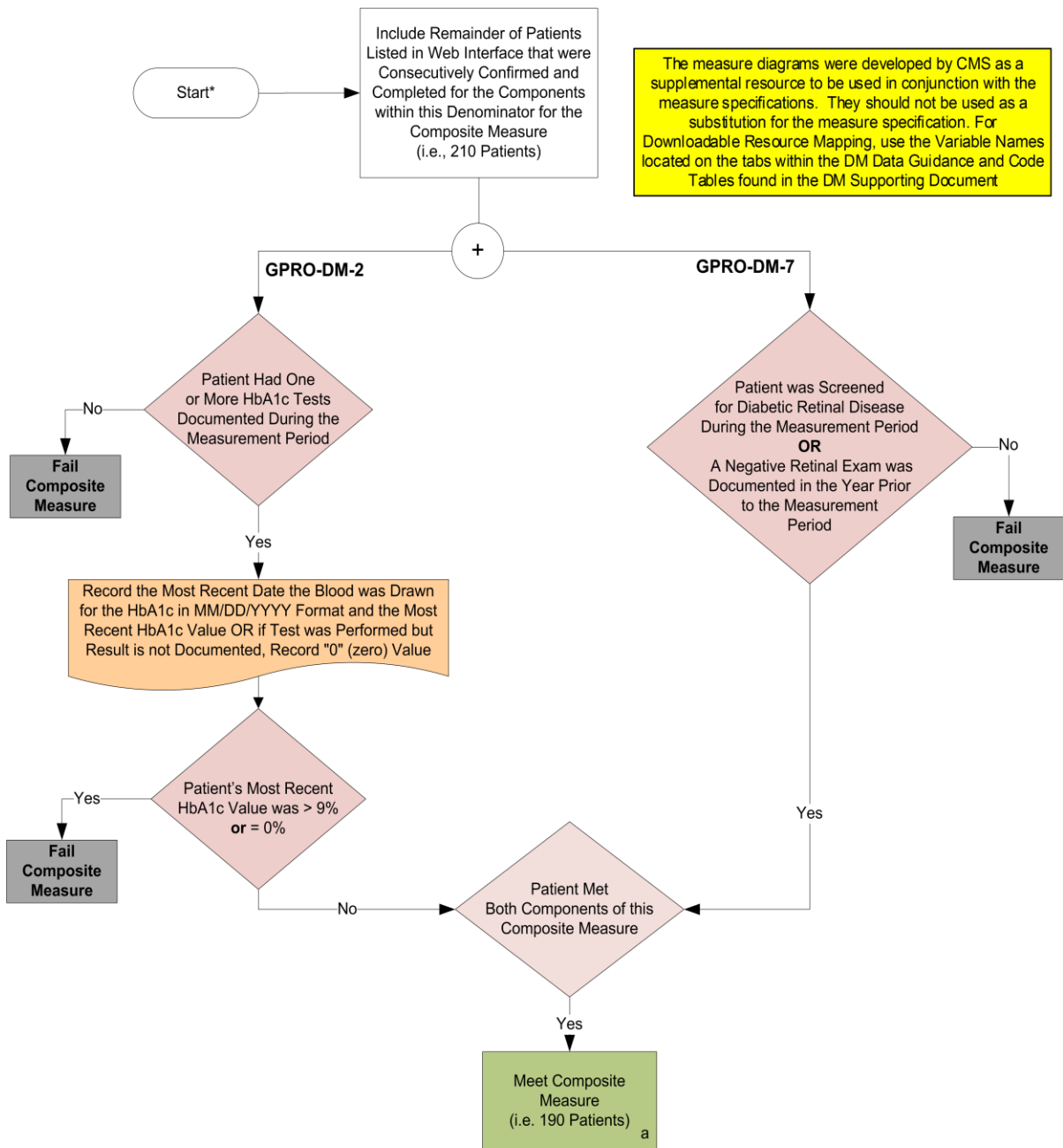
Performance Rate=

$$\frac{\text{Performance Met (a = 180 Patients)}}{\text{Eligible Denominator (d = 210 Patients)}} = \frac{180 \text{ Patients}}{210 \text{ Patients}} = 85.71\%$$

CALCULATION MAY CHANGE PENDING PERFORMANCE MET ABOVE

*See Data Guidance for further instructions to report this measure

2016 GPRO Diabetes Composite Measure
This flow applies to GPRO Web Interface



SAMPLE CALCULATION: (Overall Composite)

Composite Score

$$\frac{2 \text{ of } 2 \text{ Components of the Composite Met (a=190 Patients)}}{\text{Composite Eligible Denominator (d=210 Patients)}} = \frac{190 \text{ Patients}}{210 \text{ Patients}} = 90.48\%$$

*See Data Guidance for further instructions to report this composite

Patient Confirmation Flow

For 2016, confirmation of the “Medical Record Found”, or indicating the patient is “Not Qualified for Sample” with a reason of “In Hospice”, “Moved out of Country”, “Deceased”, or “HMO Enrollment”, will only need to be done **once** per patient. Refer to the Data Guidance for further instructions.

1. Start Patient Confirmation Flow.
2. Check to determine if Medical Record can be found.
 - a. If no, Medical Record not found, mark appropriately for completion and stop abstraction. This removes the patient from the beneficiary sample for all measures/modules. Stop processing.
 - b. If yes, Medical Record found, continue processing.
3. Check to determine if Patient Qualified for the sample.
 - a. If no, the patient does not qualify for the sample, select the reason why and enter the date (if date is unknown, enter 12/31/2016) the patient became ineligible for sample. For example; In Hospice, Moved out of Country, Deceased, HMO Enrollment. Mark appropriately for completion and stop abstraction. This removes the patient from the beneficiary sample for all measures/modules. Stop processing.
 - b. If yes, the patient does qualify for the sample; continue to the Module Confirmation Flow for Diabetes Module.

Module Confirmation Flow for Diabetes Module

For 2016, module or measure specific reasons a patient is “Not Confirmed” or excluded for “Denominator Exclusion” or “Other CMS Approved Reason” will need to be done for each measure/module where the patient appears. Refer to the Data Guidance for further instructions.

1. Start Module Confirmation Flow for Diabetes Module. Complete for consecutively ranked patients aged 18 through 75 years at the beginning of the measurement period. Further information regarding patient selection for specific disease modules and patient care measures can be found in the Web Interface Sampling Methodology Document. For patients who have the incorrect date of birth listed, a change of the patient date of birth by the abstractor may result in the patient no longer qualifying for the DM module. If this is the case, the system will automatically remove the patient from the measure requirements.
2. Check to determine if the patient has a documented history or active diagnosis of diabetes during the measurement period or year prior to the measurement period.
 - a. If no, the patient does not have a documented history of diabetes during the measurement period or year prior to the measurement period, mark appropriately for completion and stop abstraction. Patient is removed from the performance calculations for this module and composite. Stop processing
 - b. If yes, the patient does have a documented history of diabetes during the measurement period or year prior to the measurement period, continue processing.
3. Check to determine if the patient qualifies for the module (Other CMS Approved Reason).
 - a. If no, the patient does not qualify for the module select: No – Other CMS Approved Reason for patient disqualification. Mark appropriately for completion and stop abstraction. Patient is removed from the performance calculations for this module and composite. “Other CMS Approved Reason” is requested and approved by opening a Help Desk Ticket at Qnetsupport@hcqis.org. Stop processing.
 - b. If yes, the patient does qualify for the module, continue to DM-2 measure flow.

2016 GPRO DM-2 (NQF 0059): Diabetes: Hemoglobin A1c Poor Control

This flow applies to GPRO Web Interface

The measure diagrams were developed by CMS as a supplemental resource to be used in conjunction with the measure specifications. They should not be used as a substitution for the measure specifications. For Downloadable Resource Mapping, use the Variable Names located on the tabs within the DM Data Guidance and Code Tables found in the DM Supporting Document.

1. Start processing 2016 GPRO DM-2 (NQF 0059) Flow for the patients that qualified for the sample in the Patient Confirmation Flow and the Module Confirmation Flow for Diabetes Module. Note: Include remainder of patients listed in the Web Interface that were consecutively confirmed and completed for this measure in the denominator. For the sample calculation in the flow these patients would fall into the 'd' category (eligible denominator, i.e. 210 patients).
2. Check to determine if the patient had one or more HbA1c tests performed during the measurement period.
 - a. If no, patient did not have one or more HbA1c tests performed during the measurement period, performance is met and the patient will be included in the numerator. For the sample calculation in the flow these patients would fall into the 'a' category (numerator, i.e. 40 patients). Stop processing.
 - b. If yes, the patient had one or more HbA1c tests performed during the measurement period, record the most recent date the blood was drawn for the HbA1c in MM/DD/YYYY format and the most recent HbA1c value OR if test was performed but result is not documented, record "0" (zero) value. Continue processing.
3. Check to determine if the patient's most recent HbA1c value was greater than nine percent or equal to zero percent.
 - a. If no, patient's most recent HbA1c value was not greater than nine percent or equal to zero percent, performance is not met and the patient should not be included in the numerator. Stop processing.
 - b. If yes, patient's most recent HbA1c value was greater than nine percent or equal to zero percent, performance is met and the patient will be included in the numerator. For the sample calculation in the flow these patients would fall into the 'a2' category (numerator, i.e. 40 patients). Stop processing.

Sample Calculation

Performance Rate Equals

Performance Met is category 'a' plus a2' in the measure flow (80 patients)

Eligible Denominator is category 'd' in measure flow (210 patients)

80 (Performance Met) divided by 210 (Eligible Denominator) equals a performance rate of 38.10 percent

Calculation May Change Pending Performance Met

For this Measure, a Lower Rate Indicates Better Performance/Control

2016 GPRO DM-7 (NQF 0055): Diabetes: Eye Exam

This flow applies to GPRO Web Interface

The measure diagrams were developed by CMS as a supplemental resource to be used in conjunction with the measure specifications. They should not be used as a substitution for the measure specifications. For Downloadable Resource Mapping, use the Variable Names located on the tabs within the DM Data Guidance and Code Tables found in the DM Supporting Document.

1. Start processing 2016 GPRO DM-7 (NQF 0055) Flow for the patients that qualified for the sample in the Patient Confirmation Flow and the Module Confirmation Flow for Diabetes Module. Note: Include remainder of patients listed in the Web Interface that were consecutively confirmed and completed for this measure in the denominator. For the sample calculation in the flow these patients would fall into the 'd' category (eligible denominator, i.e. 210 patients).
2. Check to determine if the patient was screened for diabetic retinal disease during the measurement period OR a negative retinal exam was documented in the year prior to the measurement period.
 - a. If no, the patient was not screened for diabetic retinal disease during the measurement period OR a negative retinal exam was not documented in the year prior to the measurement period, performance is not met and the patient should not be included in the numerator. Stop processing.
 - b. If yes, the patient was screened for diabetic retinal disease during the measurement period OR a negative retinal exam was documented in the year prior to the measurement period, performance is met and the patient should be included in the numerator. For the sample calculation in the flow these patients would fall into the 'a' category (numerator, i.e. 180 patients). Stop processing.

Sample Calculation

Performance Rate Equals

Performance Met is category 'a' in the measure flow (180 patients)

Eligible Denominator is category 'd' in measure flow (210 patients)

180 (Performance Met) divided by 210 (Eligible Denominator) equals a performance rate of 85.71 percent

Calculation May Change Pending Performance Met

2016 GPRO Diabetes Composite Measure

This flow applies to GPRO Web Interface

The measure diagrams were developed by CMS as a supplemental resource to be used in conjunction with the measure specifications. They should not be used as a substitution for the measure specifications. For Downloadable Resource Mapping, use the Variable Names located on the tabs within the DM Data Guidance and Code Tables found in the DM Supporting Document.

1. Start processing 2016 GPRO Diabetes Composite Measure Flow for the patients that qualified for sample in the Patient Confirmation Flow and the Module Confirmation Flow for Diabetes Module. Note: Include remainder of patients listed in the Web Interface that were consecutively confirmed and completed for the components within this denominator for the composite measure. For the sample calculation in the flow these patients would fall into the 'd' category (eligible denominator, i.e. 210 patients).
2. Check to determine if the patient had one or more HbA1c tests during the measurement period (DM-2).
 - a. If no, the patient did not have one or more HbA1c tests during the measurement period, the patient fails the composite measure. Stop processing composite measure.
 - b. If yes, the patient did have one or more HbA1c tests during the measurement period, record the most recent date the blood was drawn for the HbA1c in MM/DD/YYYY format and the most recent HbA1c value OR if test was performed but result is not documented, record "0" (zero) value. Continue processing.
3. Check to determine if the patient's most recent HbA1c value was greater than nine percent or equal to zero percent.
 - a. If no, the patient's most recent HbA1c value was not greater than nine percent or equal to zero percent, the patient passes 1 of the 2 components of the Diabetes composite measure. Continue processing for DM-7.
 - b. If yes, the patient's most recent HbA1c value was greater than nine percent or equal to zero percent, the patient fails 1 of the 2 components of the Diabetes composite measure. Stop processing composite measure.
4. Check to determine if the patient was screened for diabetic retinal disease during the measurement period OR a negative retinal exam was documented in the year prior to the measurement period (DM-7).
 - a. If no, the patient was not screened for diabetic retinal disease during the measurement period OR a negative retinal exam was not documented in the year prior to the measurement period, the patient fails 1 of 2 components of the Diabetes composite measure. Stop processing composite measure.
 - b. If yes, the patient was screened for diabetic retinal disease during the measurement period OR a negative retinal exam was documented in the year prior to the measurement period, the patient passes 1 of 2 components of the Diabetes composite measure. Continue processing.
5. Determine if the patient passed DM-2 and DM-7 components of the composite measure. If the patient passed both components, the patient meets the composite measure. For the sample calculation in the flow these patients would fall into the 'a' category (numerator, i.e. 190 patients).

Sample Calculation

Performance Rate Equals

Performance Met is category 'a' in the measure flow (190 patients)

Eligible Denominator is category 'd' in measure flow (210 patients)

190 (Performance Met) divided by 210 (Eligible Denominator) equals a performance rate of 90.48 percent

Calculation May Change Pending Performance Met